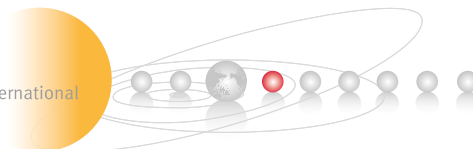




Haitian Mars^{2S} Series
Specifications / Europe
600 - 10,000 kN



STANDARD Equipment 600-10,000 kN

- Platen layout Euromap 2
- Mechanical robot interface
- Oil filtration By-pass filter up to 530 tons
Independent oil filtration (600 - 1,000 tons)
- Fast coupling for ejector pin with European design
- Parts dropping zone with photo cell monitoring (60-250 tons)
- Central lubrication with oil
- Stainless steel hopper
- Standard manifold for 6 zones
- Electrical socket box (3x 400 V - 16 A)
- Set of mold clamps + spare parts box
- Alarm light (3 color light)
- CE certification

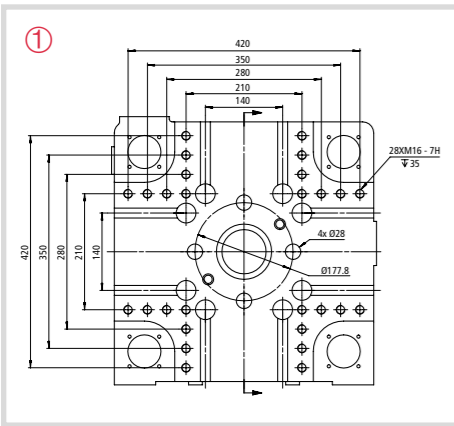


Image ①
Platen layout according to Euromap 2

Image ②
By-pass filter

Image ③
Sockets 3-phase + N + GD (3x 16 A), equipped with circuit breaker

Image ④
Set of 8 mold clamps for T-Slot or thread

Image ⑤
Set of mold clamp and spare parts box (filter, nozzle, screw tips, thermocouple heater bands, tool box)

Image ⑥
KEBA 1080-12" – standard option for ECO package

ECO Package 600-5,300 kN

OPTIONS INSIDE:

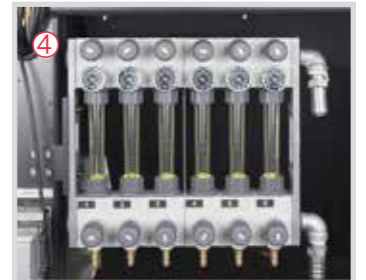
- 2 hydraulics core puller (< 530 tons) ①
- 2 air valves 10 mm ②
- Robot interface Euromap 67

CONTROLLER:

- KEBA 1080-12" with keypad and color screen
- Option: KEBA 2885-15" with color touch screen

PERFORMANCE:

- Reduced servo motor performance by 10-15% compared to "UNIVERSAL pack"
- 1 injection unit per clamping unit



UNIVERSAL Package

OPTIONS INSIDE:

- 2 air valves 10 mm
- Install bearing slide plate for hopper
- Close-loop temperature control on feeding zone
- Standard central lubrication with oil
- Min. and max. mold height with limit switch
- Closed-loop oil temperature control
- 2 hydraulic core puller (up to 4,700 kN)
- 4 hydraulic core puller (from 5,300 kN)
- Proportional valve control mold open/close
- Robot interface Euromap 67 ③
- Glass tube flow meter ④
- Nozzle movement controlled by stroke sensor

CONTROLLER:

- KEBA 1080 with 12" with keypad and color screen
- Option: KEBA 2885-15" with color touch screen ⑤

PERFORMANCE:

- Increased servo motor power (+10-15% compared to "ECO pack")
- Choice of 3 different injection unit sizes per clamping unit



Specification

ECO cost efficient Mars II S eco Series
600 - 5,300 kN

ECO cost efficient Mars II S eco Series
600 - 5,300 kN

MA600 II S

MA900 II S

CLAMPING UNIT

Clamping force	kN
Mold opening force	kN
Mold platen dimension	mm
Distance between tie bars (h x v)	mm
Mold opening stroke	mm
Max. mold height	mm
Min. mold height	mm
Ejector stroke	mm
Ejector force	kN
Minimum mold dimension (l x w)	mm

INJECTION UNIT

Screw diameter	mm
Screw L/D ratio	L/D
Shot size (theoretical)	cm ³
Injection weight (PS)	g
Injection stroke	mm
Injection speed	mm/s
Injection speed rate (PS)	g/s
Injection pressure	Mpa
Plasticizing capacity (PS)	g/s
Screw speed	rpm
Nozzle stroke	mm
Nozzle force	kN

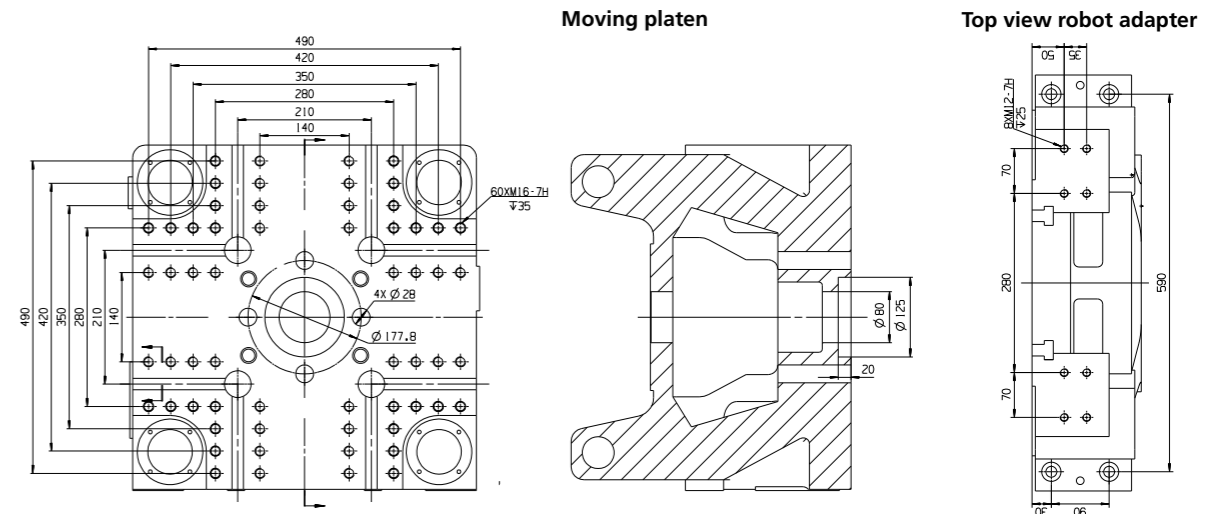
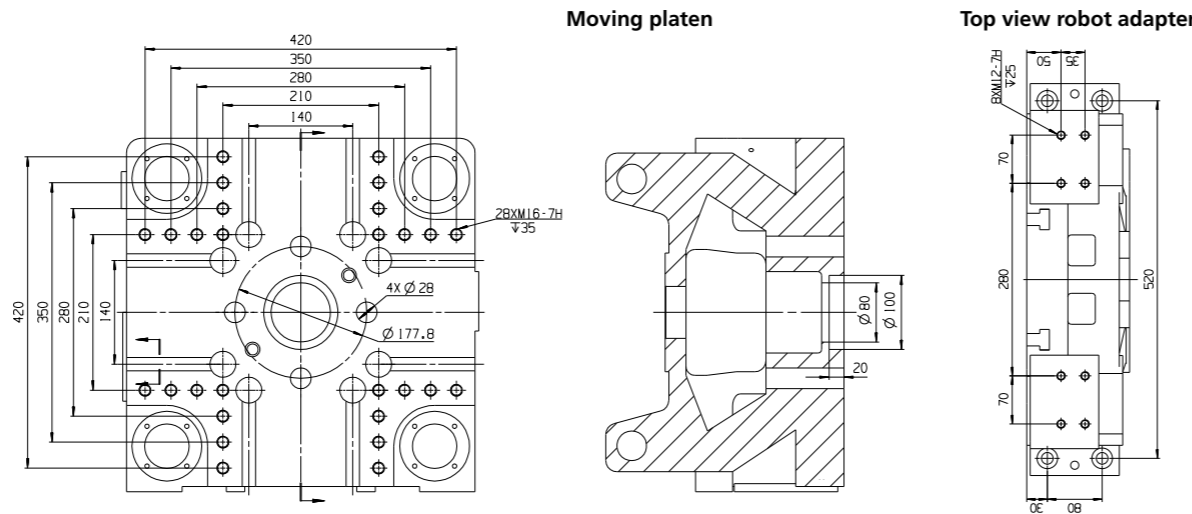
OTHERS

Maximum hydraulic pressure	bar
Servo motor power	kW
Heating power	kW
Machine dimensions (l x w x h)	m
Machine weight	t
Oil tank capacity	l

Platen dimensions

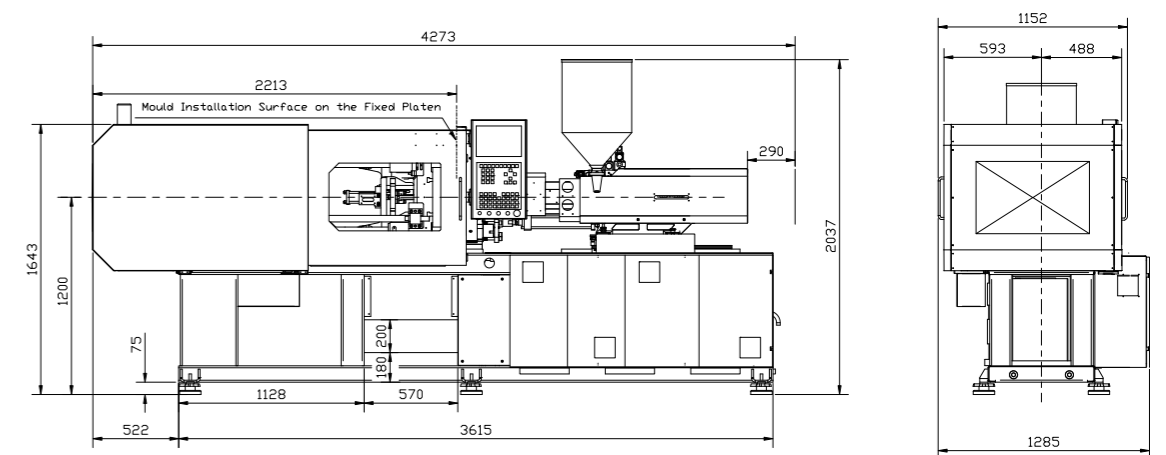
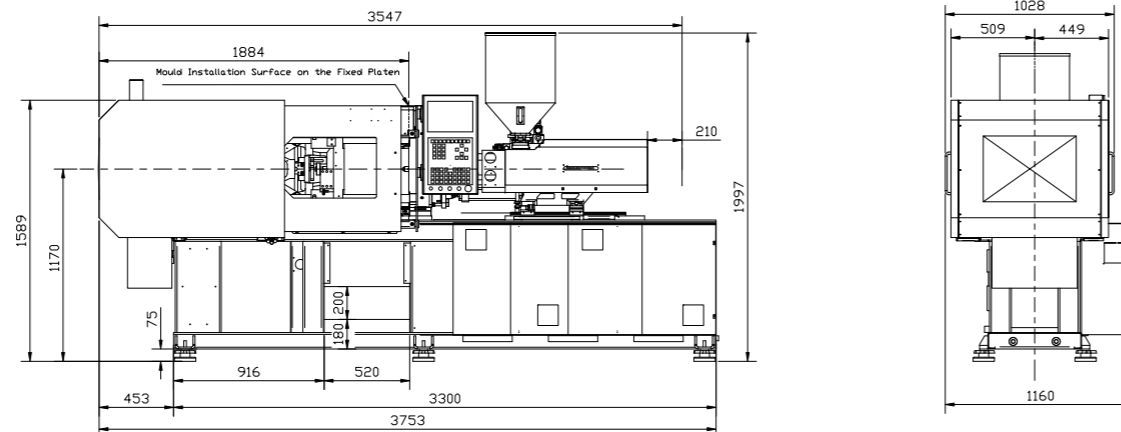
Moving and fixed platen with the same layout.
The ejector holes \varnothing is valid only for moving platen.

	600						900											
Clamping force	600						900											
Mold opening force	38						57											
Mold platen dimension	470 x 470						540 x 540											
Distance between tie bars (h x v)	310 x 310						360 x 360											
Mold opening stroke	270						310											
Max. mold height	330						390											
Min. mold height	120						150											
Ejector stroke	70						100											
Ejector force	22						33											
Minimum mold dimension (l x w)	220 x 220						250 x 250											
	130			280			130			280			400					
Screw diameter	24	24	28	28	32	36	40	24	28	32	32	36	36	40	40	36	40	45
Screw L/D ratio	23.3	23.3	20	20	22.5	20	18	23.3	20	22.5	22.5	20	20	18	18	23.3	21	18.7
Shot size (theoretical)	50	50	68	68	121	153	188	50	68	121	121	153	153	188	188	173	214	270
Injection weight (PS)	46	46	62	62	110	139	172	45	62	110	110	139	139	171	171	157	194	246
Injection stroke	110			150				110			150			170				
Injection speed	124 / 146			123				146			104 / 123			118				
Injection speed rate (PS)	51	60	70	82	90	114	141	60	82	76	90	97	114	119	141	109	135	171
Injection pressure	250	250	184	184	234	185	150	250	184	234	234	185	150	150	150	229	186	147
Plasticizing capacity (PS)	5.1	6	7.4	8.6	12.5	16.5	20.0	6	8.6	10.5	12.5	13.9	16.5	16.8	20.0	17.8	21.8	28.8
Screw speed	0-265 / 0-310			0-285				0-310			0-240 / 0-285			0-275				
Nozzle stroke	210			290				210			290			325				
Nozzle force	24.7			24.7				24.7			24.7			41.2				
Maximum hydraulic pressure	200			200				200			200			200				
Servo motor power	7.5 / 11			13				11			11 / 13			15				
Heating power	6.25			7.85				6.25			7.85			11.45				
Machine dimensions (l x w x h)	3.76 x 1.16 x 2.00			3.95 x 1.16 x 2.01				4.14 x 1.29 x 2.03			4.28 x 1.29 x 2.04			4.61 x 1.29 x 2.07				
Machine weight	2.5			2.58				3.42			3.5			3.7				
Oil tank capacity	120			120				150			150			150				



Machine dimensions

We reserve the right to make changes as a result of further technical advantages.



Specification

ECO cost efficient Mars II S eco Series
600 - 5,300 kN

ECO cost efficient Mars II S eco Series
600 - 5,300 kN

CLAMPING UNIT

Clamping force	kN
Mold opening force	kN
Mold platen dimension	mm
Distance between tie bars (h x v)	mm
Mold opening stroke	mm
Max. mold height	mm
Min. mold height	mm
Ejector stroke	mm
Ejector force	kN
Minimum mold dimension (l x w)	mm

INJECTION UNIT

Screw diameter	mm
Screw L/D ratio	L/D
Shot size (theoretical)	cm ³
Injection weight (PS)	g
Injection stroke	mm
Injection speed	mm/s
Injection speed rate (PS)	g/s
Injection pressure	Mpa
Plasticizing capacity (PS)	g/s
Screw speed	rpm
Nozzle stroke	mm
Nozzle force	kN

OTHERS

Maximum hydraulic pressure	bar
Servo motor power	kW
Heating power	kW
Machine dimensions (l x w x h)	m
Machine weight	t
Oil tank capacity	l

Platen dimensions

Moving and fixed platen with the same layout.
The ejector holes \varnothing is valid only for moving platen.

Machine dimensions

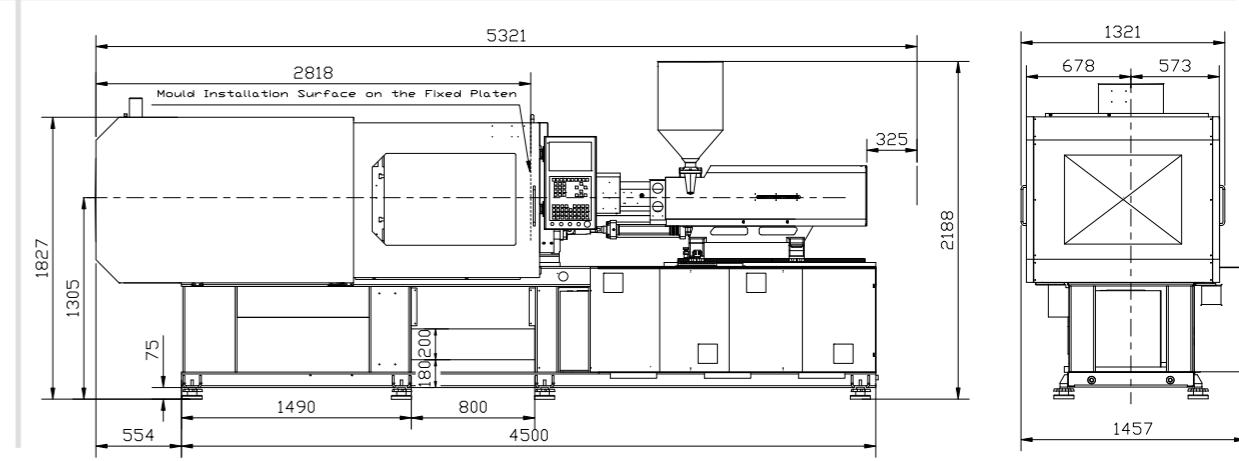
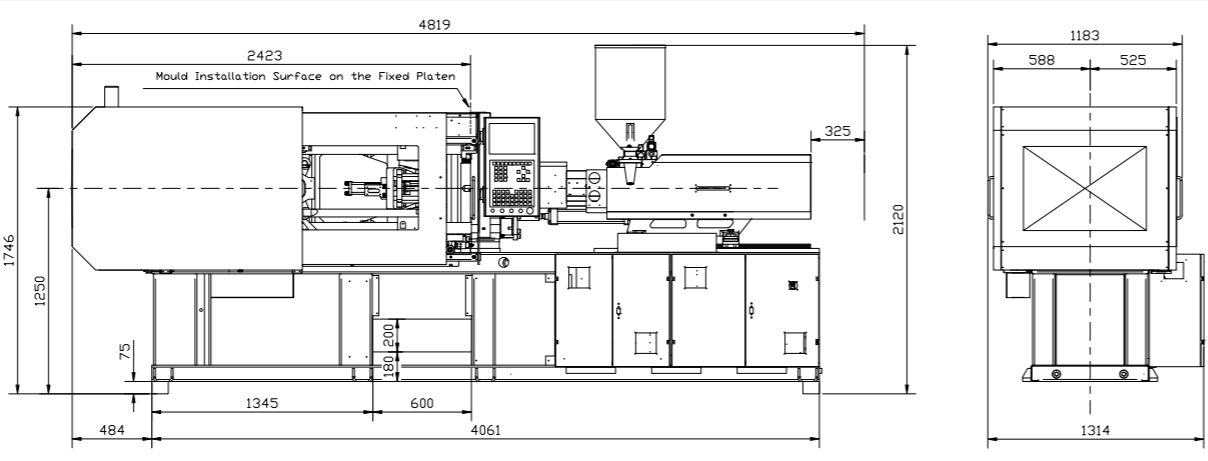
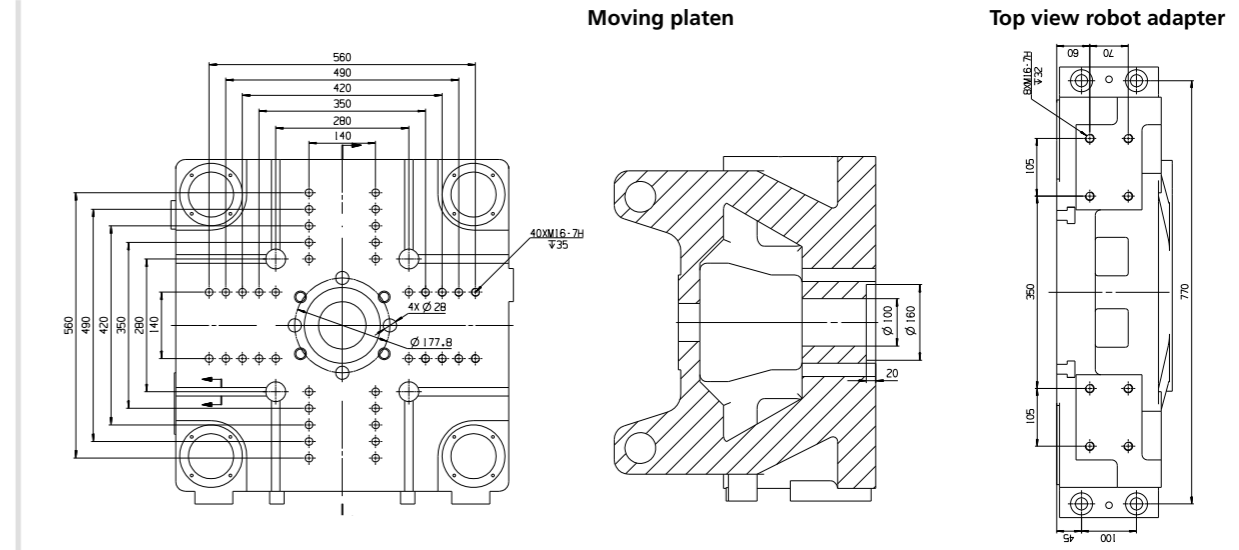
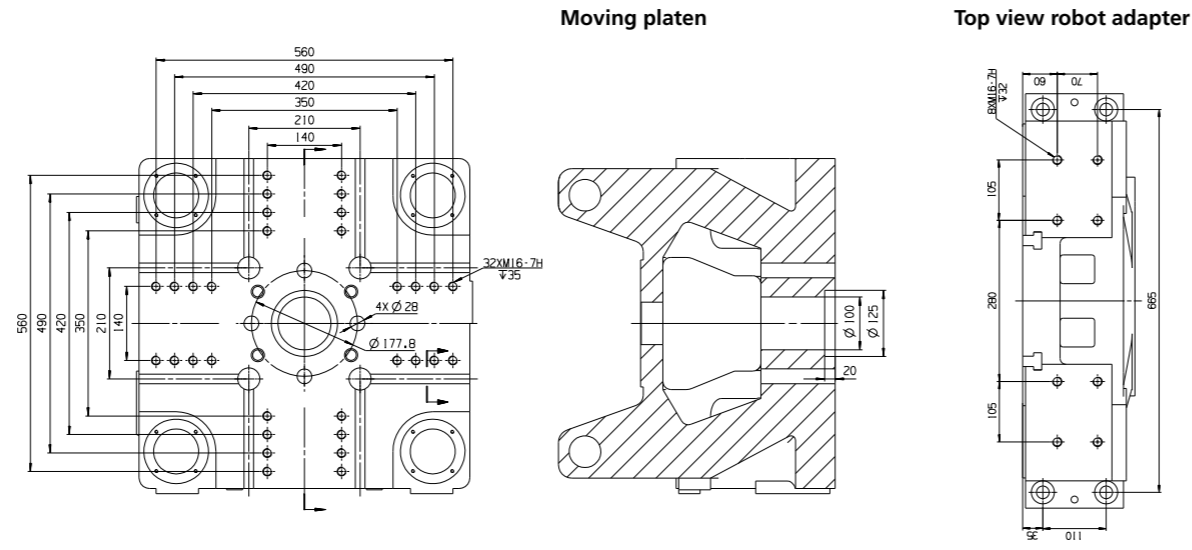
We reserve the right to make changes as a result of further technical advantages.

MA1200 II S

Clamping force	1200											
Mold opening force	80											
Mold platen dimension	615 x 615											
Distance between tie bars (h x v)	410 x 410											
Mold opening stroke	360											
Max. mold height	450											
Min. mold height	150											
Ejector stroke	120											
Ejector force	33											
Minimum mold dimension (l x w)	290 x 290											
INJECTION UNIT	280 400 570											
Screw diameter	32	36	40	36	36	40	40	45	45	40	45	50
Screw L/D ratio	22.5	20	18	23.3	23.3	21	21	18.7	18.7	22.5	20	18
Shot size (theoretical)	121	153	188	173	173	214	214	270	270	253	320	395
Injection weight (PS)	110	139	172	157	157	194	194	246	246	230	291	359
Injection stroke	150											
Injection speed	123											
Injection speed rate (PS)	90	114	141	92	109	114	135	144	171	137	174	215
Injection pressure	234	185	150	229	229	186	186	147	147	225	178	144
Plasticizing capacity (PS)	12.5	16.5	20.0	14.9	17.8	18.2	21.8	24.1	28.8	21.2	28.1	35.3
Screw speed	0-285											
Nozzle stroke	290											
Nozzle force	24.7											
OTHERS	200											
Maximum hydraulic pressure	200											
Servo motor power	13											
Heating power	7.85											
Machine dimensions (l x w x h)	4.55 x 1.32 x 2.09											
Machine weight	4.15											
Oil tank capacity	170											

MA1600 II S

Clamping force	1600														
Mold opening force	105														
Mold platen dimension	700 x 700														
Distance between tie bars (h x v)	470 x 470														
Mold opening stroke	430														
Max. mold height	520														
Min. mold height	180														
Ejector stroke	140														
Ejector force	33														
Minimum mold dimension (l x w)	330 x 330														
INJECTION UNIT	400 570 750														
Screw diameter	36	40	45	40	40	45	45	50	50	45	50	55			
Screw L/D ratio	23.3	21	18.7	22.5	22.5	20	20	18	18	22.2	20	18.2			
Shot size (theoretical)	173	214	270	253	253	320	320	395	395	334	412	499			
Injection weight (PS)	157	194	246	230	230	291	291	359	359	304	375	454			
Injection stroke	170														
Injection speed	118														
Injection speed rate (PS)	109	135	171	111	137	141	174	174	215	166	205	248			
Injection pressure	229	186	147	225	225	178	178	144	144	223	180	149			
Plasticizing capacity (PS)	17.8	21.8	28.8	17.0	21.2	22.6	28.1	28.4	35.3	23.9	30.0	36.7			
Screw speed	0-275														
Nozzle stroke	325														
Nozzle force	41.2														
OTHERS	200														
Maximum hydraulic pressure	200														
Servo motor power	15														
Heating power	11.45														
Machine dimensions (l x w x h)	5.22 x 1.46 x 2.18														
Machine weight	5.52														
Oil tank capacity	210														



Specification

ECO cost efficient Mars II S eco Series
600 - 5,300 kN

ECO cost efficient Mars II S eco Series
600 - 5,300 kN

CLAMPING UNIT

Clamping force	kN
Mold opening force	kN
Mold platen dimension	mm
Distance between tie bars (h x v)	mm
Mold opening stroke	mm
Max. mold height	mm
Min. mold height	mm
Ejector stroke	mm
Ejector force	kN
Minimum mold dimension (l x w)	mm

INJECTION UNIT

Screw diameter	mm
Screw L/D ratio	L/D
Shot size (theoretical)	cm ³
Injection weight (PS)	g
Injection stroke	mm
Injection speed	mm/s
Injection speed rate (PS)	g/s
Injection pressure	Mpa
Plasticizing capacity (PS)	g/s
Screw speed	rpm
Nozzle stroke	mm
Nozzle force	kN

OTHERS

Maximum hydraulic pressure	bar
Servo motor power	kW
Heating power	kW
Machine dimensions (l x w x h)	m
Machine weight	t
Oil tank capacity	l

Platen dimensions

Moving and fixed platen with the same layout.
The ejector holes \varnothing is valid only for moving platen.

Machine dimensions

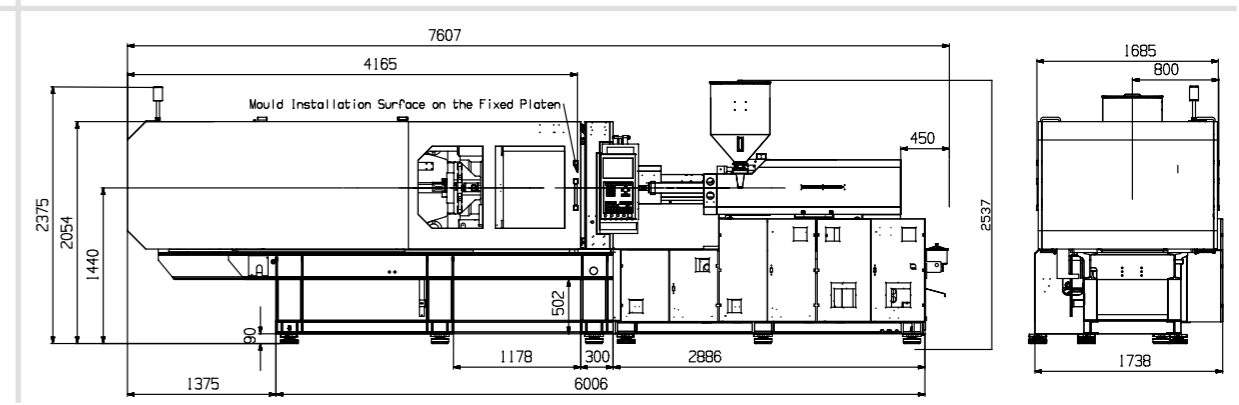
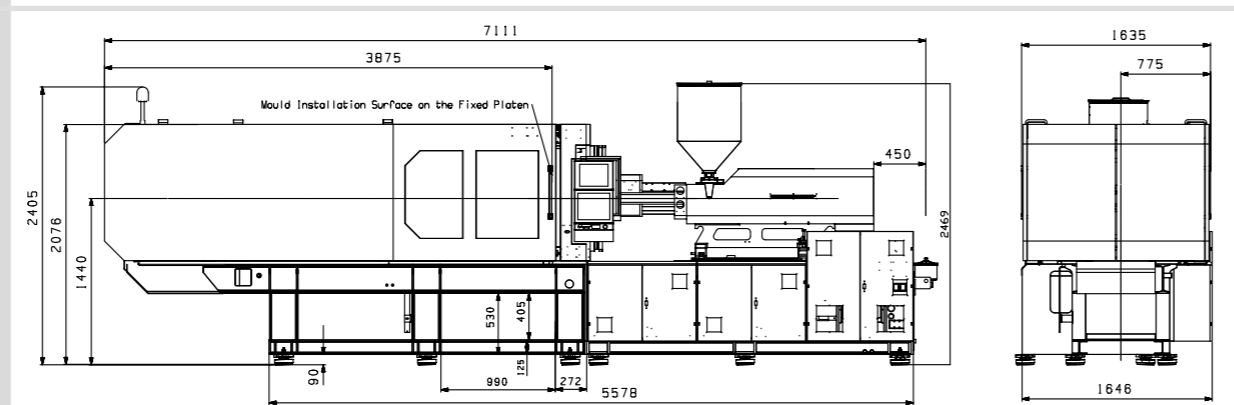
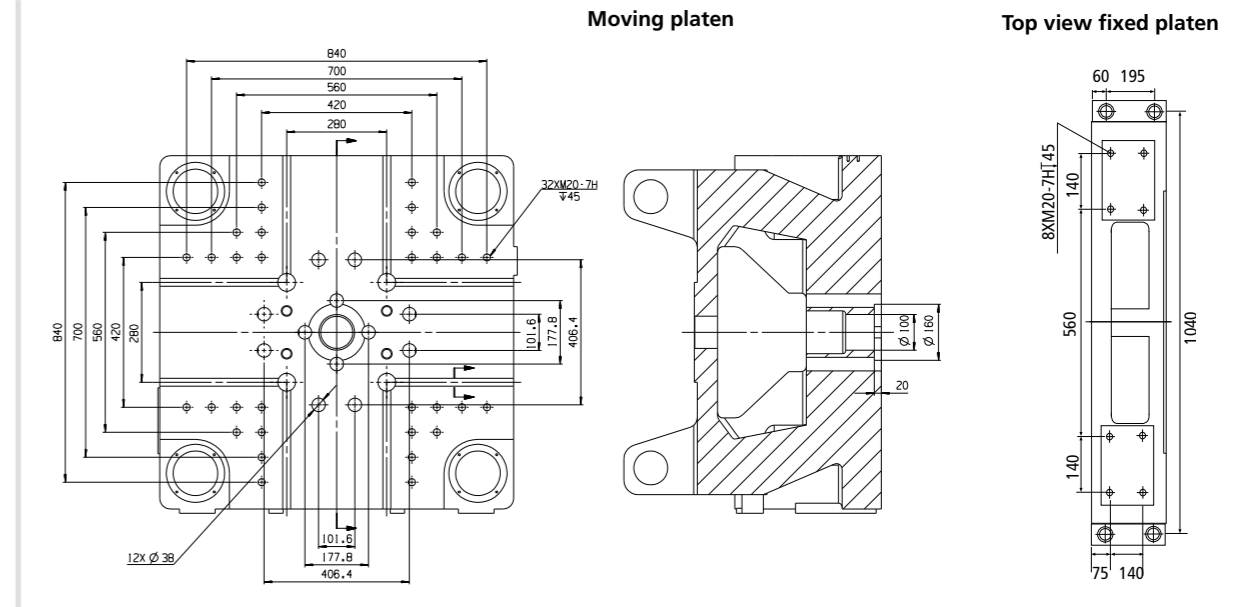
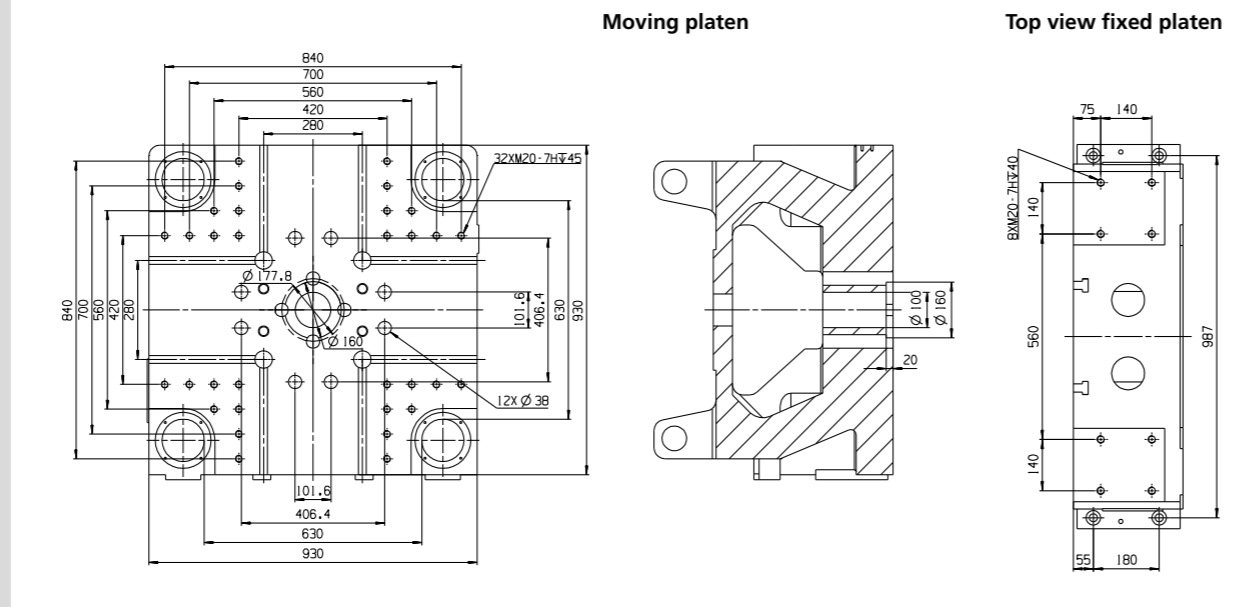
We reserve the right to make changes as a result of further technical advantages.

MA2800 II S

Clamping force	2800																								
Mold opening force	180																								
Mold platen dimension	930 x 930																								
Distance between tie bars (h x v)	630 x 630																								
Mold opening stroke	590																								
Max. mold height	630																								
Min. mold height	230																								
Ejector stroke	150																								
Ejector force	62																								
Minimum mold dimension (l x w)	440 x 440																								
INJECTION UNIT	1000			1350						1700															
Screw diameter	50	55	60	55	60	65	65	60	65	70	55	60	65	60	60	65	65	70	70	65	70	75	80		
Screw L/D ratio	22	20	18,3	21,8	21,8	20	18,5	18,5	21,7	20	18,6	21,8	20	18,5	21,7	21,7	20	18,6	18,6	21,5	20	18,7	17,5		
Shot size (theoretical)	471	570	679	618	618	735	863	863	792	929	1078	618	735	863	792	792	929	929	1078	1078	1068	1239	1423	1619	
Injection weight (PS)	429	519	618	562	562	669	785	785	720	846	981	562	669	785	720	720	845	845	981	981	972	1128	1295	1473	
Injection stroke	240												260			280									
Injection speed	125												103 / 128			112									
Injection speed rate (PS)	223	270	322	224	277	266	329	313	386	289	339	394	277	329	386	289	339	339	394	394	351	407	467	531	
Injection pressure	224	185	155	223	223	188	188	160	160	213	182	157	223	188	160	213	213	182	182	157	157	212	183	159	140
Plasticizing capacity (PS)	38,1	46,7	55,3	36,9	45,9	43,8	54,5	48,7	60,6	51,1	56,7	64,4	45,9	54,5	60,6	51,1	51,1	56,7	56,7	64,4	64,4	58,7	67,3	76	84
Screw speed	0-235												0-205 / 0-255			0-225									
Nozzle stroke	450												450			450									
Nozzle force	99												99			99									
OTHERS	200												200			200									
Servo motor power	30												30 / 37			37									
Heating power	21,45												25,05			28,65									
Machine dimensions (l x w x h)	7.12 x 1.65 x 2.47												7.12 x 1.65 x 2.47			7.21 x 1.65 x 2.54									
Machine weight	10,7												11			11,3									
Oil tank capacity	440												440			440									

MA3200 II S

Clamping force	3200																									
Mold opening force	200																									
Mold platen dimension	990 x 990																									
Distance between tie bars (h x v)	680 x 680																									
Mold opening stroke	640																									
Max. mold height	680																									
Min. mold height	250																									
Ejector stroke	160																									
Ejector force	62																									
Minimum mold dimension (l x w)	475 x 475																									
INJECTION UNIT	1350			1700						2250																
Screw diameter	55	60	65	60	60	65	65	70	70	65	70	75	80	55	60	65	60	60	65	65	70	75	80			
Screw L/D ratio	21,8	20	18,5	21,7	21,7	20	18,6	18,6	21,5	20	18,7	17,5	21,8	20	18,5	21,7	21,7	20	18,6	18,6	21,5	20	18,7	17,5		
Shot size (theoretical)	618	735	863	792	792	929	929	1078	1078	1068	1239	1423	1619	618	735	863	792	792	929	929	1078	1078	1068	1239	1423	1619
Injection weight (PS)	562	669	785	562	562	669	785	785	720	846	981	562	669	785	720	720	845	845	981	981	972	1128	1295	1473		
Injection stroke	260												280			322										
Injection speed	128												112 / 112			116										
Injection speed rate (PS)	277	329	386	277	329	386	277	329	386	351	407	467	531	277	329	386	277	329	386	277	329	386	277	329	386	
Injection pressure	223	188	160	213	213	182	157	157	212	183	159	140	223	188	160	213	213	182	182	157	157	212	183	159	140	
Plasticizing capacity (PS)	45,9	54,5	60,6	51,1	51,1	56,7	64,4	64,4	58,7	67,3	76	84	45,9	54,5	60,6	51,1	51,1	56,7	56,7	64,4	64,4	58,7	67,3	76	84	
Screw speed	0-255												0-225 / 0-225			0-220										
Nozzle stroke	450												450			500										
Nozzle force	99												99			500										
OTHERS	200												200			200										
Servo motor power	37												37 / 37			45										
Heating power	25,05												28,65			36,4										
Machine dimensions (l x w x h)	7.61 x 1.74 x 2.47												7.61 x 1.74 x 2.54			7.76 x 1.74 x 2.55										
Machine weight	12,9												13,2			13,5										
Oil tank capacity	500												500			500										



Specification

ECO cost efficient Mars II S eco Series
600 - 5,300 kN

ECO cost efficient Mars II S eco Series
600 - 5,300 kN

CLAMPING UNIT

Clamping force	kN
Mold opening force	kN
Mold platen dimension	mm
Distance between tie bars (h x v)	mm
Mold opening stroke	mm
Max. mold height	mm
Min. mold height	mm
Ejector stroke	mm
Ejector force	kN
Minimum mold dimension (l x w)	mm

INJECTION UNIT

Screw diameter	mm
Screw L/D ratio	L/D
Shot size (theoretical)	cm ³
Injection weight (PS)	g
Injection stroke	mm
Injection speed	mm/s
Injection speed rate (PS)	g/s
Injection pressure	Mpa
Plasticizing capacity (PS)	g/s
Screw speed	rpm
Nozzle stroke	mm
Nozzle force	kN

OTHERS

Maximum hydraulic pressure	bar
Servo motor power	kW
Heating power	kW
Machine dimensions (l x w x h)	m
Machine weight	t
Oil tank capacity	l

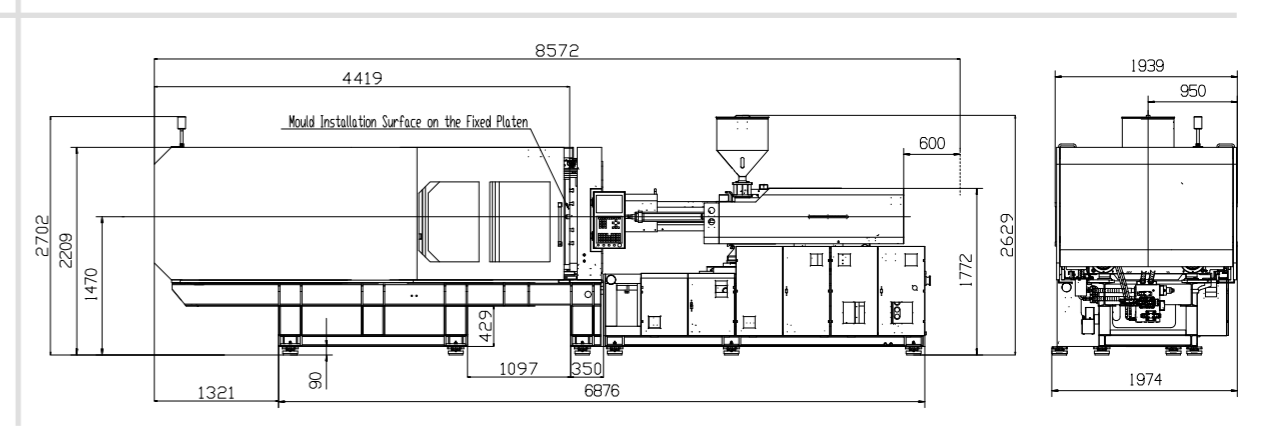
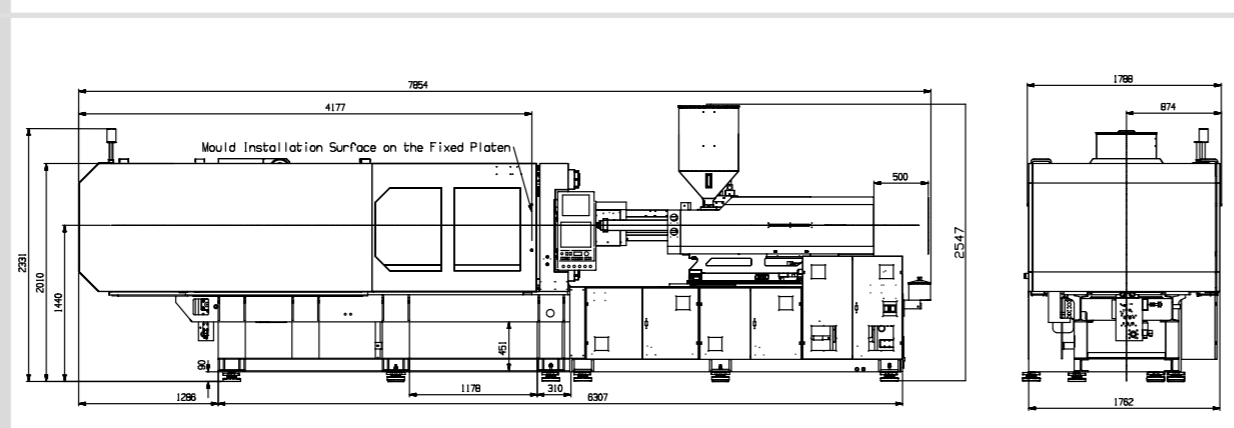
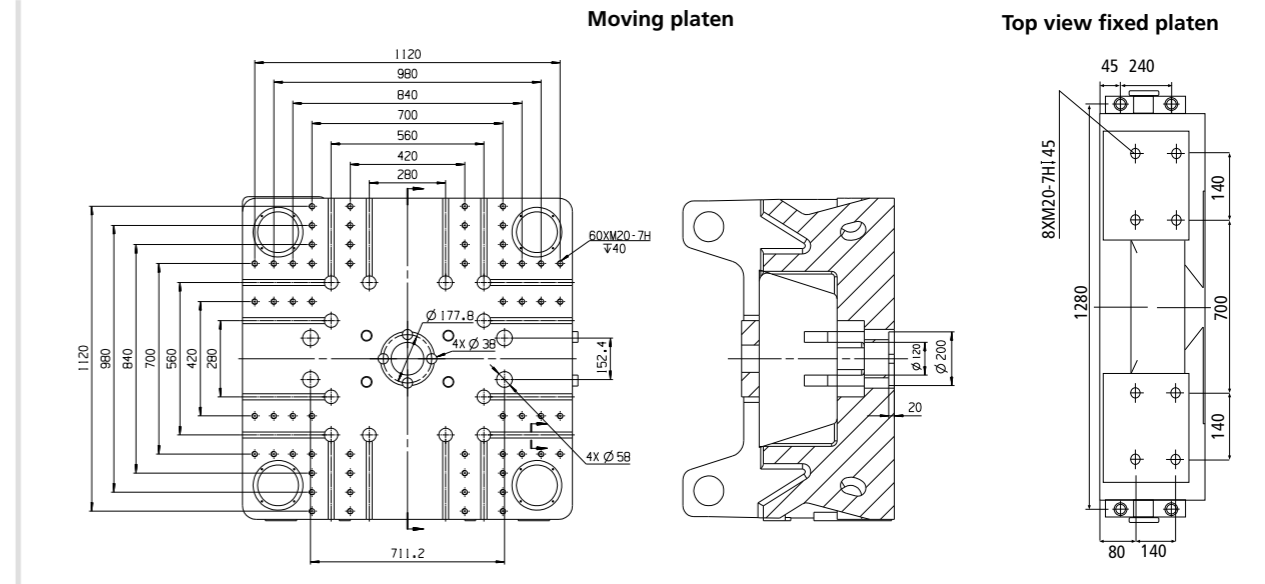
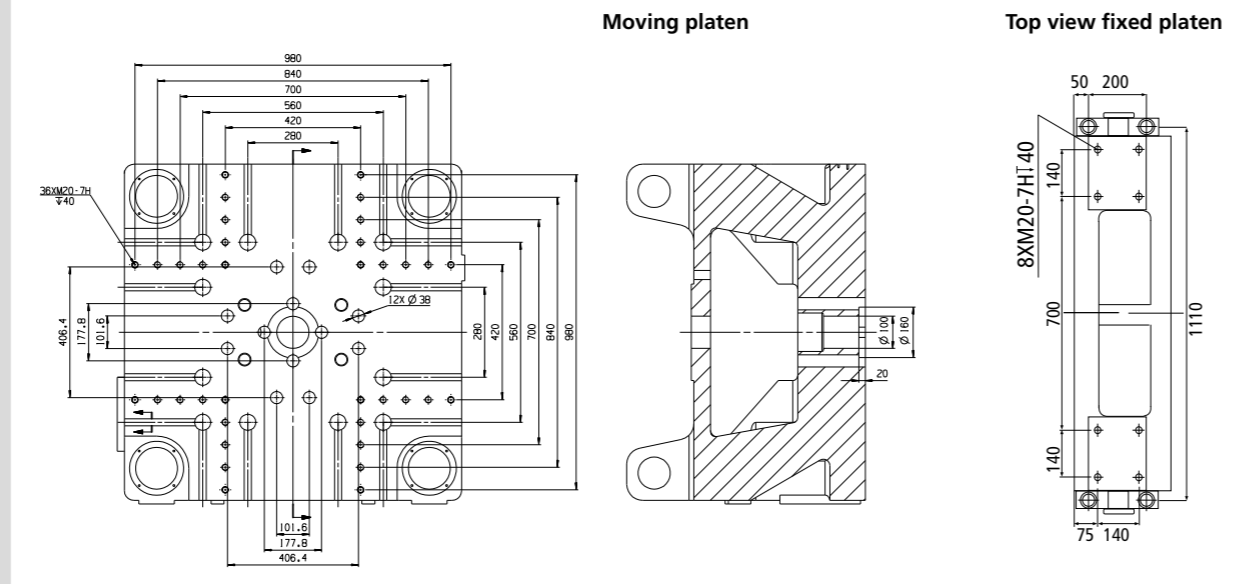
Platen dimensions

Moving and fixed platen with the same layout.
The ejector holes Ø is valid only for moving platen.

Machine dimensions

We reserve the right to make changes as a result of further technical advantages.

	MA3800 II S												MA4700 II S																		
Clamping force	3800												4700																		
Mold opening force	240												300																		
Mold platen dimension	1046 x 1046												1210 x 1180																		
Distance between tie bars (h x v)	730 x 730												820 x 800																		
Mold opening stroke	700												780																		
Max. mold height	730												780																		
Min. mold height	280												320																		
Ejector stroke	180												200																		
Ejector force	110												110																		
Minimum mold dimension (l x w)	510 x 510												580 x 560																		
	1700				2250				3200				2250				3200				4500										
Screw diameter	60	65	70	65	65	70	70	75	75	80	80	70	80	85	90	65	70	75	80	70	70	80	80	85	85	90	90	80	85	90	100
Screw L/D ratio	21.7	20	18.6	21.5	21.5	20	20	18.7	18.7	17.5	17.5	22.9	20	19.1	17.8	21.5	20	18.7	17.5	22.9	22.9	20	20	19.1	19.1	17.8	17.8	22	20.7	19.6	17.6
Shot size (theoretical)	792	929	1078	1068	1068	1239	1239	1423	1423	1619	1619	1424	1860	2100	2354	1068	1239	1423	1619	1424	1424	1860	1860	2100	2100	2354	2354	2212	2497	2799	3456
Injection weight (PS)	720	846	981	972	972	1127	1127	1295	1295	1473	1473	1296	1693	1911	2142	972	1128	1295	1473	1296	1296	1693	1693	1911	1911	2142	2142	2013	2272	2547	3145
Injection stroke	280												322																		
Injection speed	112												96 / 116																		
Injection speed rate (PS)	289	339	394	291	351	337	407	387	467	441	531	395	516	583	653	351	407	467	531	332	395	434	516	489	583	549	653	551	622	698	861
Injection pressure	213	182	157	212	212	183	183	159	140	140	224	172	152	136	212	183	159	140	224	224	172	172	152	152	136	136	197	175	156	126	
Plasticizing capacity (PS)	51.1	56.7	64.4	49.3	58.7	56.6	67.3	64	76	71	84	67.9	89.5	98.2	111	58.7	67.3	76	84	56.6	67.9	74.6	89.5	81.9	98.2	92.6	111.0	80.3	88.8	101.0	123.4
Screw speed	0-225												0-185 / 0-220																		
Nozzle stroke	450												500																		
Nozzle force	99												99																		
	200				200				200				200				200				200										
Servo motor power	37				37 / 45				55				45				45 / 55				65										
Heating power	28.65				36.4				37.6				36.4				37.6				42.6										
Machine dimensions (l x w x h)	7.85 x 1.79 x 2.54				7.86 x 1.79 x 2.55				8.33 x 1.79 x 2.60				8.45 x 1.98 x 2.58				8.58 x 1.98 x 2.71				9.02 x 2.07 x 2.97										
Machine weight	14.4				14.7				15.4				17.8				18.5				21.2										
Oil tank capacity	540				540				540				640				640				800										



Specification

ECO cost efficient Mars II S eco Series
600 - 5,300 kN

CLAMPING UNIT

Clamping force	kN
Mold opening force	kN
Mold platen dimension	mm
Distance between tie bars (h x v)	mm
Mold opening stroke	mm
Max. mold height	mm
Min. mold height	mm
Ejector stroke	mm
Ejector force	kN
Minimum mold dimension (l x w)	mm

INJECTION UNIT

Screw diameter	mm
Screw L/D ratio	L/D
Shot size (theoretical)	cm ³
Injection weight (PS)	g
Injection stroke	mm
Injection speed	mm/s
Injection speed rate (PS)	g/s
Injection pressure	Mpa
Plasticizing capacity (PS)	g/s
Screw speed	rpm
Nozzle stroke	mm
Nozzle force	kN

OTHERS

Maximum hydraulic pressure	bar
Servo motor power	kW
Heating power	kW
Machine dimensions (l x w x h)	m
Machine weight	t
Oil tank capacity	l

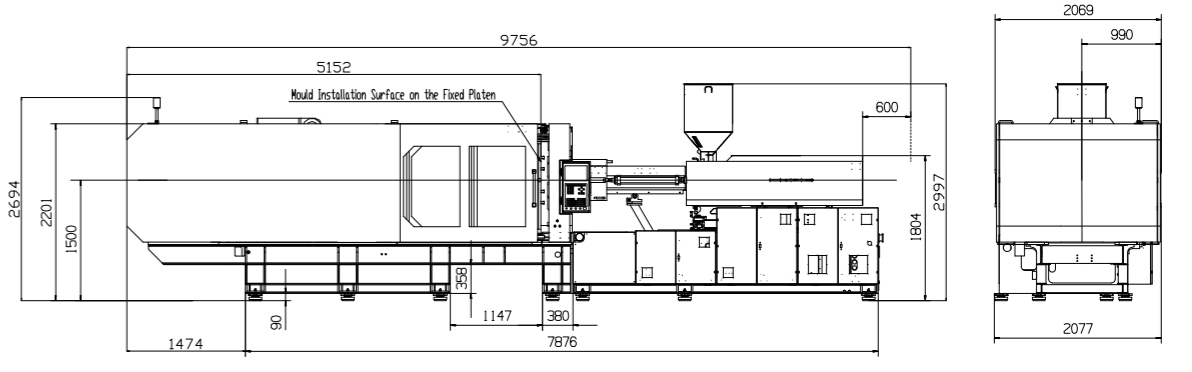
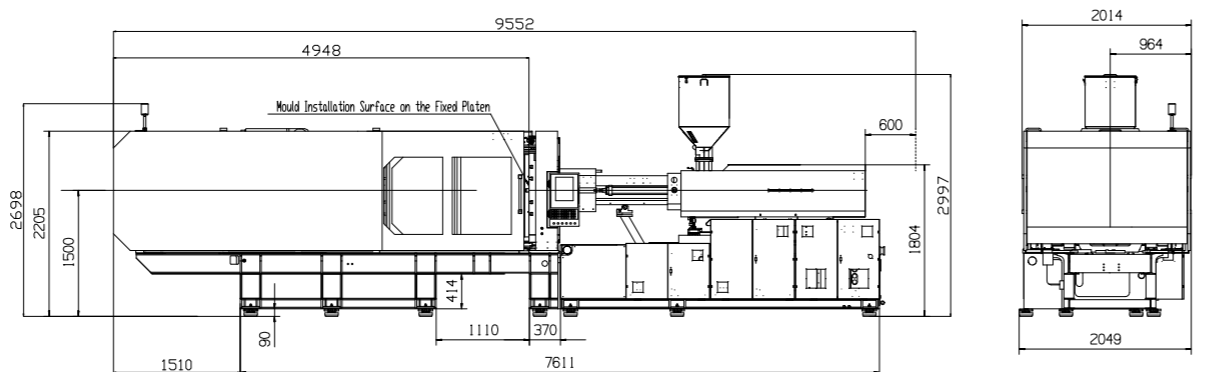
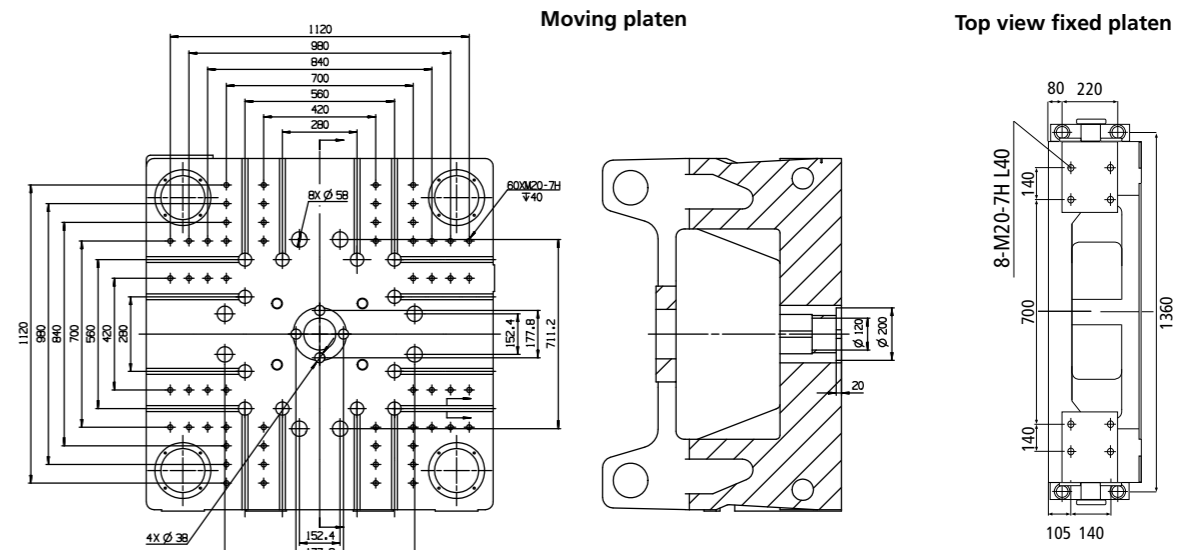
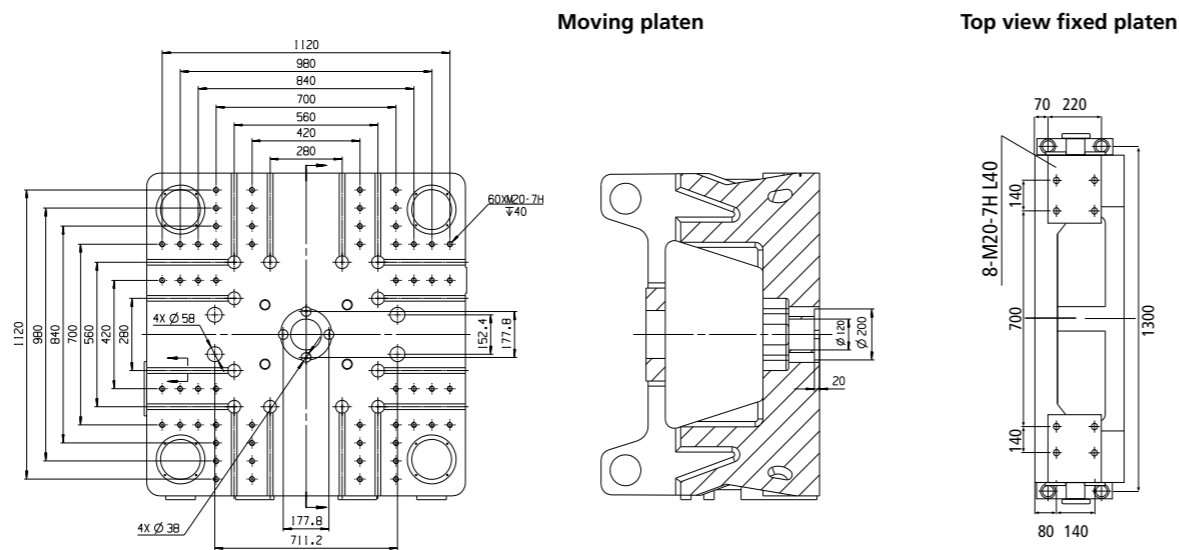
Platen dimensions

Moving and fixed platen with the same layout.
The ejector holes Ø is valid only for moving platen.

Machine dimensions

We reserve the right to make changes as a result of further technical advantages.

	MA5300 II S												MA6000 II S																							
	3200						4500						5000						3200						4500						5000					
Clamping force	5300												6000																							
Mold opening force	350												380																							
Mold platen dimension	1240 x 1250												1300 x 1320																							
Distance between tie bars (h x v)	840 x 830												880 x 880																							
Mold opening stroke	850												900																							
Max. mold height	850												880																							
Min. mold height	350												380																							
Ejector stroke	220												240																							
Ejector force	158												158																							
Minimum mold dimension (l x w)	590 x 580												620 x 620																							
Screw diameter	70	80	85	90	80	80	85	85	90	90	100	100	80	90	100	110	70	80	85	90	80	85	90	100	80	90	100	110								
Screw L/D ratio	22.9	20	19.1	17.8	22	22	20.7	20.7	19.6	19.6	17.6	17.6	24.8	22	19.8	18	22.9	20	19.1	17.8	22	20.7	19.6	17.6	24.8	22	19.8	18								
Shot size (theoretical)	1424	1860	2100	2354	2212	2212	2497	2497	2799	2799	3456	3456	2262	2863	3534	4276	1424	1860	2100	2354	2212	2497	2799	3456	2262	2863	3534	4276								
Injection weight (PS)	1296	1692	1911	2142	2013	2013	2272	2272	2547	2547	3145	3145	2058	2605	3216	3892	1296	1692	1911	2142	2013	2272	2547	3145	2058	2605	3216	3892								
Injection stroke	370						440						370						440																	
Injection speed	113						98 / 120						113						120																	
Injection speed rate (PS)	395	516	583	653	449	551	507	622	568	698	702	861	492	623	769	930	395	516	583	653	551	622	698	861	492	623	769	930								
Injection pressure	224	172	152	136	197	197	175	175	156	156	126	126	226	179	145	120	224	172	152	136	197	175	156	126	226	179	145	120								
Plasticizing capacity (PS)	67.9	89.5	98.2	111.0	64.7	80.3	71.5	88.8	81.4	101.0	99.4	123.4	73.8	92.6	114	134	67.9	89.5	98.2	111.0	80.3	88.8	101.0	123.4	73.8	92.6	114	134								
Screw speed	0-210						0-145 / 0-180						0-210						0-180																	
Nozzle stroke	600						600						600						600																	
Nozzle force	99						99						99						99																	
Maximum hydraulic pressure	200						200						200						200																	
Servo motor power	55						55 / 65						55						65																	
Heating power	37.6						42.6						37.6						42.6																	
Machine dimensions (l x w x h)	9.13 x 2.05 x 2.66						9.56 x 2.05 x 3.00						9.35 x 2.31 x 3.08						9.76 x 2.08 x 3.00																	
Machine weight	23.3						26						26.3						29																	
Oil tank capacity	800						800						800						800																	



Specification

CLAMPING UNIT

Clamping force	kN
Mold opening force	kN
Mold platen dimension	mm
Distance between tie bars (h x v)	mm
Mold opening stroke	mm
Max. mold height	mm
Min. mold height	mm
Ejector stroke	mm
Ejector force	kN
Minimum mold dimension (l x w)	mm

INJECTION UNIT

Screw diameter	mm
Screw L/D ratio	L/D
Shot size (theoretical)	cm ³
Injection weight (PS)	g
Injection stroke	mm
Injection speed	mm/s
Injection speed rate (PS)	g/s
Injection pressure	Mpa
Plasticizing capacity (PS)	g/s
Screw speed	rpm
Nozzle stroke	mm
Nozzle force	kN

OTHERS

Maximum hydraulic pressure	bar
Servo motor power	kW
Heating power	kW
Machine dimensions (l x w x h)	m
Machine weight	t
Oil tank capacity	l

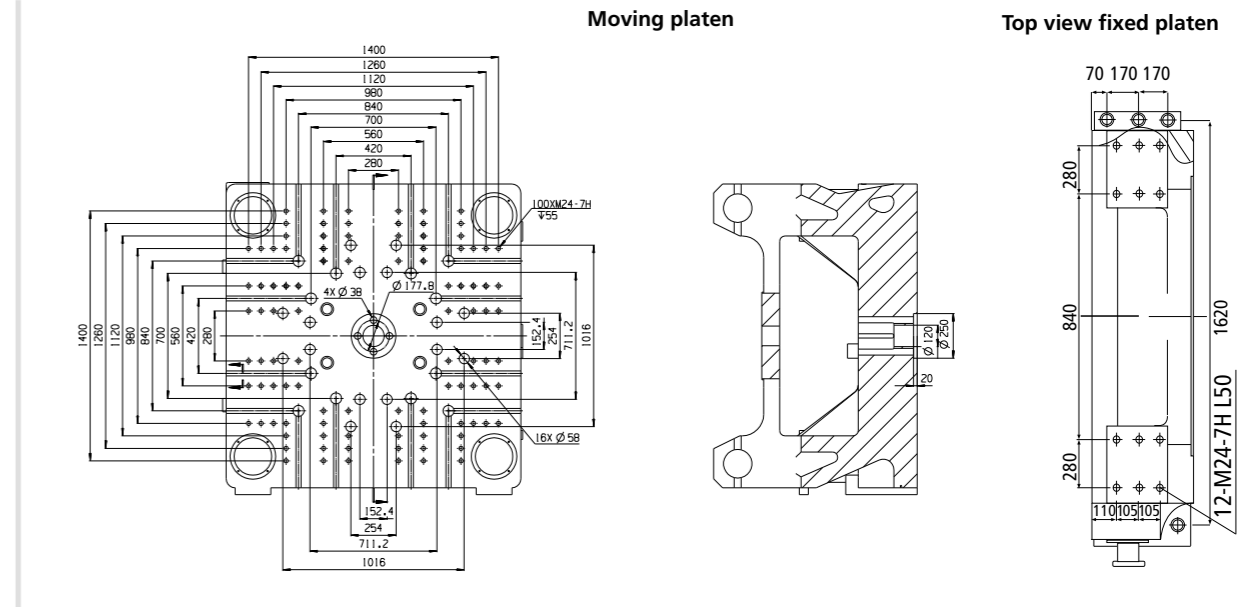
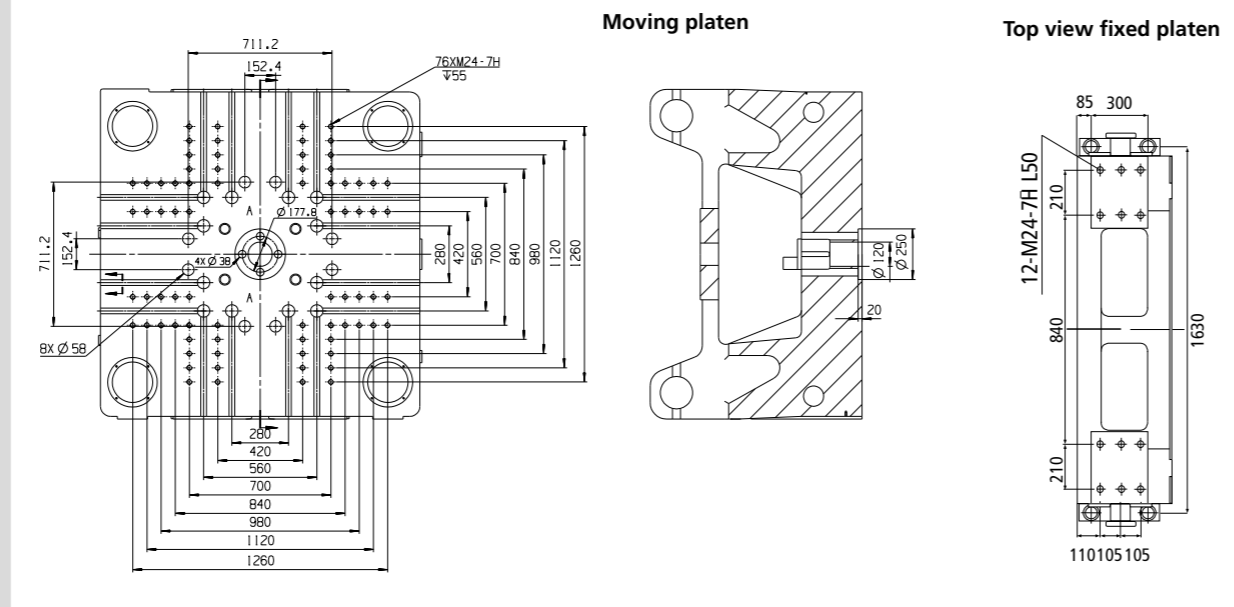
Platen dimensions

Moving and fixed platen with the same layout.
The ejector holes Ø is valid only for moving platen.

Machine dimensions

We reserve the right to make changes as a result of further technical advantages.

	MA9000 II S												MA10000 II S											
	9000												10000											
	600												660											
	1580 x 1600												1650 x 1690											
	1080 x 1080												1160 x 1160											
	1120												1220											
	1080												1160											
	450												500											
	300												320											
	186												215											
	760 x 760												810 x 810											
	5000				6800				8400				6800				8400							
	80	90	100	110	90	100	110	120	100	110	120	130	90	100	110	120	100	110	120	130				
	24.8	22	19.8	18	24.4	22	20	18.3	24.2	22	20.2	18.6	24.4	22	20	18.3	24.2	22	20.2	18.6				
	2262	2863	3534	4276	2990	3691	4467	5316	4006	4847	5768	6769	2990	3691	4467	5316	4006	4847	5768	6769				
	2058	2605	3216	3892	2721	3359	4065	4838	3645	4410	5249	6160	2721	3359	4065	4837	3645	4410	5249	6160				
	450				470				510				470				510							
	107				99				99				99				99							
	492	623	769	930	573	707	855	1018	705	853	1015	1191	573	707	855	1018	705	853	1015	1191				
	226	179	145	120	219	178	147	123	213	176	148	126	219	178	147	123	213	176	148	126				
	73.8	92.6	114	134	88.8	109	129	151	100	120	139	160	88.8	109	129	151	100	120	139	160				
	0-151				0-134				0-115				0-134				0-115							
	660				710				760				710				760							
	99				99				99				99				99							
	200				200				200				200				200							
	22 + 45				22 + 55				37 + 55				22 + 55				37 + 55							
	49.5				75.55				76.95				75.55				76.95							
	11.38 x 2.44 x 3.13				11.72 x 2.44 x 3.15				12.18 x 2.49 x 3.16				11.80 x 2.51 x 3.19				12.39 x 2.51 x 3.20							
	43				45				47				49				51							
	880				1000				1150				1000				1150							





PREMIER MOULDING MACHINERY

Official UK Sales & Service Partner for Haitian International
Ladymead Business Park, Quainton, Aylesbury, Bucks, HP22 4AN
Sales - 01296 655 555 • Service - 01296 653 037
e-mail: sales@haitian.co.uk
www.haitian.co.uk

HAITIAN INTERNATIONAL HOLDINGS LIMITED

No.1688 Haitian Road. Xiaogang. Beilun.
Ningbo. Zhejiang.
P.R.China 315801
e-mail: haitian@mail.haitian.com
www.haitian.com

NINGBO HAITIAN HUAYUAN MACHINERY CO.. LTD.

Export Processing Zone. Ningbo 315800 China
Tel.: +86-574-86177242
Fax: +86-574-86221864
e-mail: haitian@mail.haitian.com
www.haitian.com

HAITIAN INTERNATIONAL GERMANY GMBH

Haitianstrasse 1
92263 Ebermannsdorf
Germany
Tel. +49-9438-9439-0
Fax +49-9438-9439-350
info@haitiangermany.com
www.haitiangermany.com

